

SC Workers' Compensation Commission



1333 Main Street, Suite 500

P.O. Box 1715

Columbia, South Carolina 29202

WWW.WCC.SC.GOV



South Carolina Workers' Compensation Commission

History

The South Carolina Industrial Commission was created on September 1, 1935, to administer and enforce South Carolina's first workers' compensation law.

Throughout the years the law has been amended by statute, defined by case law, and altered through administrative policies and procedures; however, the basic premise and purpose of the law has remained unaltered. In May, 1986, the name of the Industrial Commission was changed to the more descriptive S.C. Workers' Compensation Commission. The Commission works closely with the Governor, the General Assembly, and the Commission's many constituents to ensure that the workers' compensation system is fair, equitable, and responsive to the needs of the citizens of S.C.

The Commission is responsible for administering the South Carolina Workers' Compensation Act. The Act serves to relieve employers of liability from common law suits involving negligence in exchange for becoming responsible for medical costs and loss wages of on-the-job injuries regardless of fault.



South Carolina Workers' Compensation Commission

Commissioners



T. Scott Beck
Chairman
Term Expires
June 30, 2020



Susan S. Barden
Term Expires
June 30, 2022



Melody L. James
Term Expires
June 30, 2022



Aisha Taylor
Term Expires
June 30, 2020



Avery B. Wilkerson, Jr.
Term Expires
June 30, 2020



Gene McCaskill
Term Expires
June 30, 2024



Michael R. Campbell II
Term Expires:
June 30, 2024



Commissioners

The 7 Commissioners are appointed by the Governor with the advice and consent of the Senate for serve six-year staggered terms.

The Chairman is appointed by the Governor for a 2-year term with the advice and consent of the Senate. The Chairman serves as the chief executive officer of the Commission



Executive Director

Gary M. Cannon

gcannon@wcc.sc.gov



Chief operating officer of the Commission; appointed by and serves at the pleasure of the seven Commissioners.



Mission Statement

To provide an equitable and timely system of benefits to injured workers and to employers in the most responsive, accurate, and reliable manner possible.



Commission's Objectives

1. Provide sure, prompt, and reasonable income and medical benefits to work-related accident victims, or income benefits to their dependents, regardless of fault;
2. Provide an exclusive remedy and reduce court delays, costs and judicial workloads arising out of personal injury litigation;
3. Provide an exclusive remedy and reduce delays, costs and judicial workloads arising out of personal injury litigation;
4. Control the cost of adjudicating the cases to all parties by processing the claims in an efficient and effective manner and reducing time for a case to be heard and the number of cases appealed;
5. Control the overall cost to the system while preserving access to service by adopting fair and reasonable medical fee schedules.



System Stakeholders

Employers

Employees

Insurance Carriers

Medical Service Providers

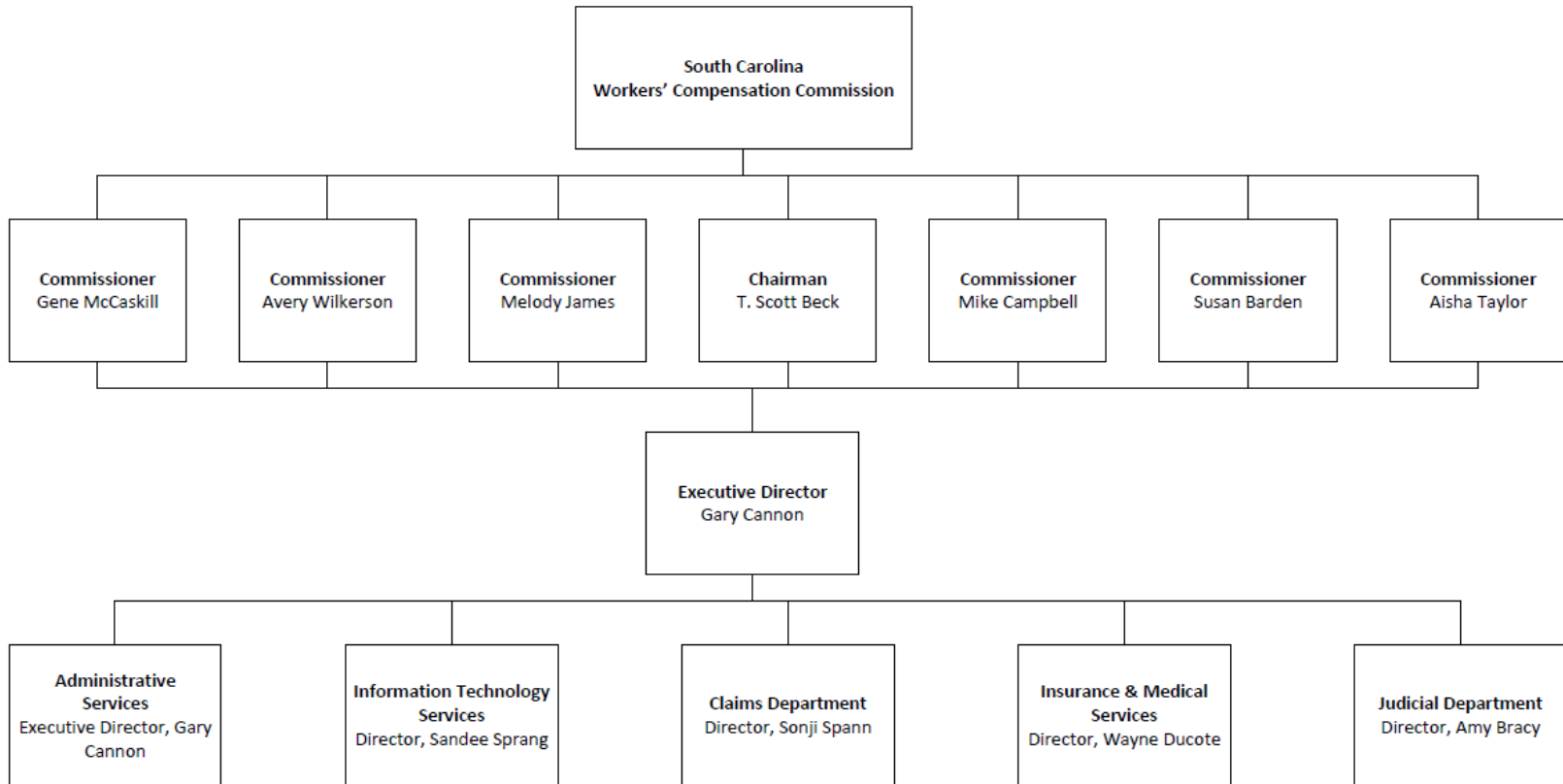
Attorneys

Uninsured Employers Fund

SC General Assembly



South Carolina Workers' Compensation Commission





Commissioners

The Commissioners are responsible for hearing and determining all contested cases, approving settlements and hearing appellate reviews. The State is divided into seven districts. Each Commissioner is assigned a different district two months.



Administrative Services

Gary M Cannon, Executive Director

GCannon@wcc.sc.gov

Responsible for general supervision and management of the Commission's five departments and well as administrative services to include legal, finance, personnel, staff development and training, purchasing, inventory and supply control, facilities maintenance, motor vehicles, and mail.



Claims Department

Sonji Spann, Director

Sspann@wcc.sc.gov

Responsible for the management of all reported accidents and non-judicial matters relating to individual claims; monitors claims for accuracy and conformity with the rights and benefits established by law; manages all active and closed claims records and conducts research as requested.



Insurance and Medical Services Department

Wayne Ducote, Director

wducote@wcc.sc.gov

Records and monitors required workers' compensation insurance coverage; investigates matters of non-compliance and enforces compliance with the law; administers the workers' compensation self-insurance program; establishes fee schedules for doctors and hospitals and resolves disputed bills.



Judicial Department

Amy Bracy, Director

Abracy@wcc.sc.gov

Prepares and schedules all contested matters – viewings and informal conferences – to be heard by a Commissioner; coordinates cases heard by Appellate Panels and prepares and transmits cases appealed to the court system.



Information Technology Department

Sandee Sprang, IT Director
ssprang@wcc.sc.gov

Responsible responsible for all data processing and information systems development and maintenance for coordination and management of the flow of information throughout the Commission.



Annual Operating Budget

FY2019-20 **\$8.1 m**

Employees **53**



South Carolina Workers' Compensation Commission

Statistical Summary

South Carolina Workers' Compensation Statistical Recap Sheet	FY 2017-2018	FY2018-2019	% *
1. Number of Employers Purchasing Insurance	89,863	97,124	8.1%
2. Number of Employers Qualifying as Self-Insurers	2,105	2,285	8.6%
3. Investigations Active Beginning of Fiscal Year	144	369	156.3%
4. Investigations Initiated	2,032	2,234	9.9%
5. Investigations Set for Show Cause Hearings/ Consent Agreements Received	809	902	11.5%
6. Total Investigations Closed	1,804	1,940	7.5%
7. Investigations Active at Close of Fiscal Year	369	528	43.1%
8. Number of Accident Cases Filed with the Commission	67,255	65,827	-2.1%
A. New Cases	64,205	62,751	-2.3%
i. WCC Cases Created	24,316	24,155	-0.7%
ii. Minor Medical Reported (12M)	39,889	38,596	-3.2%
B. Reopened cases	2,872	3,076	7.1%
9. Number of Cases Closed during Fiscal Year	66,852	64,419	-3.6%
A. Individually Reported Accidents	26,963	25,823	-4.2%
B. Minor Medical Only Accidents Reported in Summary	39,889	38,596	-3.2%
10. Total Compensation & Medical Cost Paid on Closed Cases	\$934,859,520	\$995,364,542	6.5%
A. Medical Costs	\$352,701,292	\$381,345,767	8.1%
i. WCC Closed Cases	\$321,215,174	\$346,710,512	7.9%
ii. Minor Medical Reported (12M)	\$31,486,119	\$34,635,255	10.0%
B. Compensation	\$582,158,228	\$614,018,775	5.5%
11. Temporary Total Compensation Agreements	14,433	13,957	-3.3%
12. Supplemental Compensation Agreements	2,925	2,842	-2.8%
13. Applications for Stop Payment - expedited hearing	1,505	1,480	-1.7%
14. Cases Docketed for Hearings	10,284	10,031	-2.5%
15. Cases Assigned for Informal Conferences	4,398	4,033	-8.3%
16. Hearings Conducted by Single Commissioners	899	752	-16.4%
17. Informal Conferences Conducted	2,972	2,780	-6.5%
18. Decisions, Opinions & Orders, Single Commissioners	2,718	2,834	4.3%
19. Cases Appealed to Full Commission for Review	289	298	3.1%
20. Reviews Conducted by Full Commission or Panel	134	118	-11.9%
21. Decisions and Opinions by Full Commission or Panel	194	199	2.6%
22. Commission Decisions Appealed to Higher Court	57	61	7.0%
23. Common Law Settlements	11,287	11,312	0.2%
24. Attorney Fee Approvals	8,706	8,314	-4.5%
25. Self-Insurance Tax Collected	5,205,353	\$5,056,527	-2.9%



**Please visit the Commission's
website for valuable information
and helpful links.**

www.wcc.sc.gov